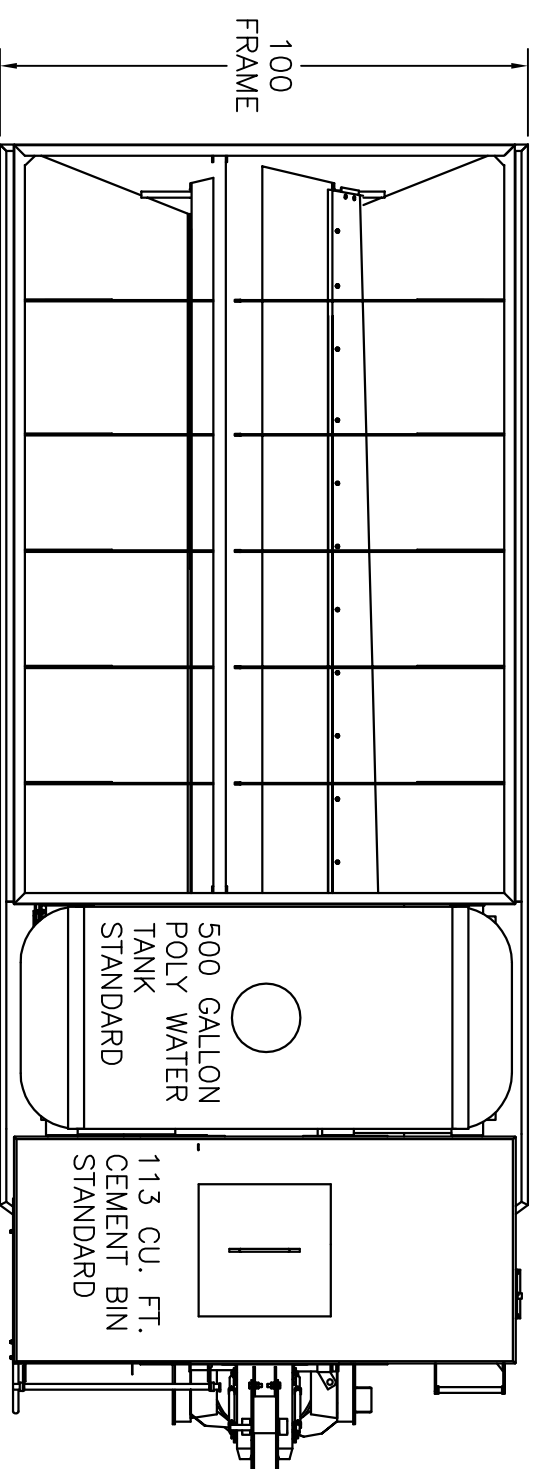


STONE BIN VOLUME
257 CU. FT.
55%

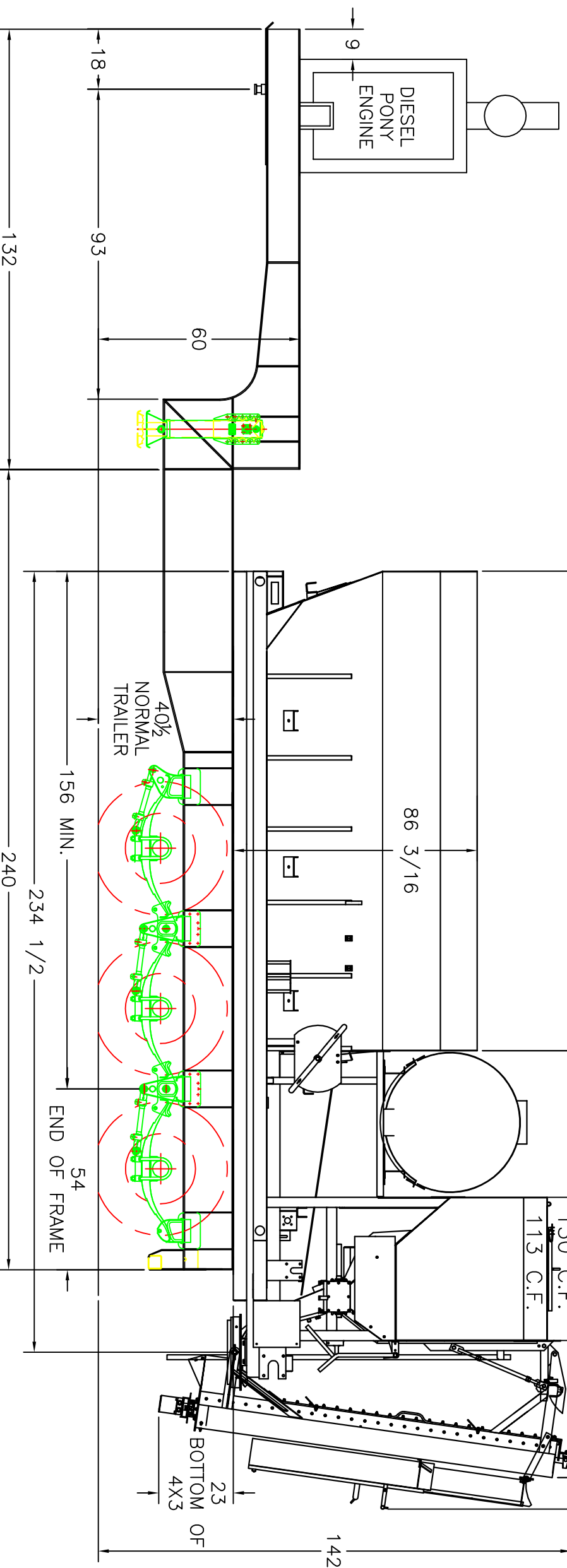
TOTAL BIN VOLUME
469 CU. FT.

SAND BIN VOLUME
212 CU. FT.
45%

PONY ENGINE AND/OR WATER TANK MAY
BE LOCATED ON FRONT DECK FOR
WEIGHT DISTRIBUTION.



MANUAL CHUTES = 9 1/2
S.P. POWER CHUTES = 17
H.P. POWER CHUTES = 14
S.P. SWIVEL CHUTES = 10
H.P. SWIVEL CHUTES = 13



VMMB BIN VOLUME
453 CU. FT.

<p>ZIMMERMAN INDUSTRIES INC. EPHRATA, PA. — 717-733-6168</p>	
412 414 HEAVY TRAILER	
12 YARD CONFIGURATION	
TOLERANCES FINISH RESULT ± .001" FINISH RESULT ± 1/32" FINISH RESULT ± 1"	DRAWN BY: CWS SCALE: NTS CHECK BY: [] DATE: 2/16/2008 DRAWING NO.: 412N2

The information contained in this drawing is the sole property of Zimmerman Industries. Any production in part or whole without written permission of Zimmerman Industries is prohibited.